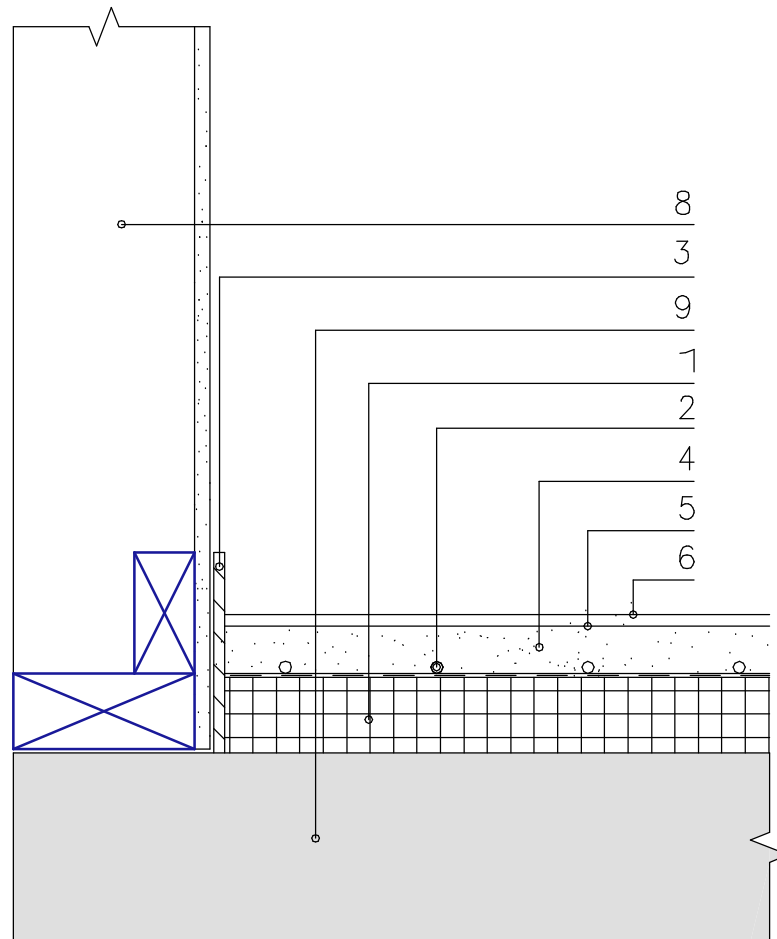


# EM 490 floor finished with EM 4610



- |   |   |   |   |
|---|---|---|---|
| 1 | Insulation Board                                | 6 | 4610 5–8mm thick<br>(polished when dry) |
| 2 | UFH water pipe                                  | 8 | Timber wall                             |
| 3 | Edge expansion strip                            | 9 | Concrete floor                          |
| 4 | 490 screed – min 51mm thick                     |   |   |
| 5 | 2 coats 4716 Primer after<br>490 is fully cured |   |   |